

T.D.S.

ELEMENTS FOR
MOULD & DIE



PLASTICA E PRESSOFUSIONE
ELEMENTI DI CENTRAGGIO
PLASTIC AND DIE-CASTING
LOCATING ELEMENTS

INDICE ELEMENTI DI CENTRAGGIO LOCANTING UNITS LIST

HZ05



pg. 102

HZ051



pg. 102

HZ06



pg. 103

HZ061



pg. 103

CXX



pg. 104

HZ056



pg. 104

HZ055



pg. 105

HZ080



pg. 106

HZ085



pg. 106

HZ085-2



pg. 107

ME1304



pg. 107

TM



pg. 108

SZ51



pg. 108

DXSI



pg. 109

DRSI



pg. 109

CL508



pg. 110

HZ07



pg. 111

HZ17



pg. 111

HZ18



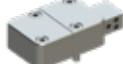
pg. 112

HZ19



pg. 113

PSLPM

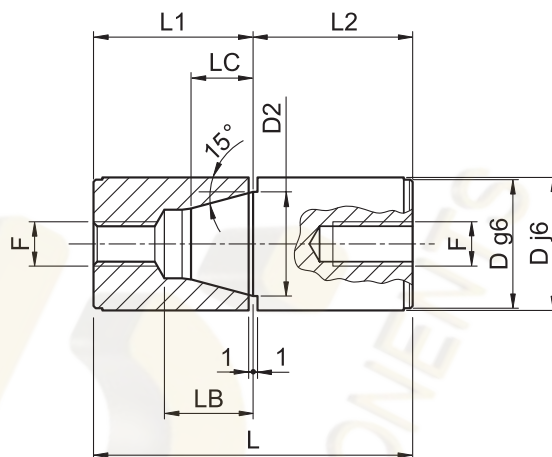


pg. 114

SZ46



pg. 115



MAT_ 1.7131 61-63 HRC



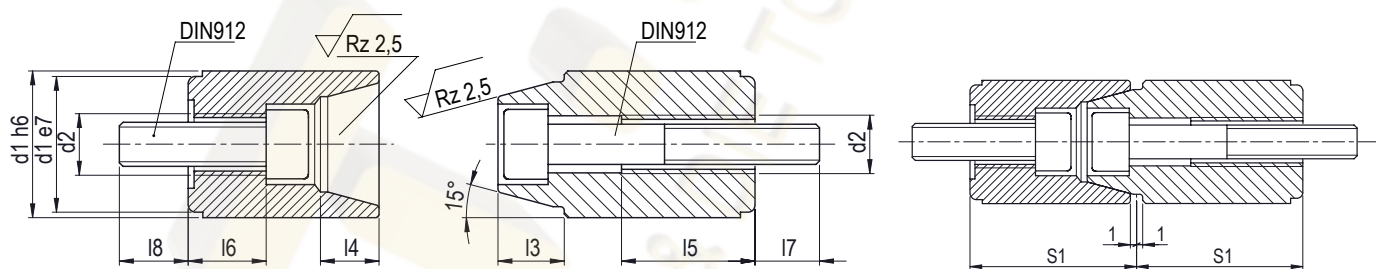
Code per n. pezzi
HZ05 / D / L 4pz.

Code	D	L	L1	L2	LC	LB	D2	F
HZ05/16/34	16	34	17	17	7	11	11	5 MA
HZ05/20/54	20	54	27	27	11	15	15	8 MA
HZ05/25/54	25	54	27	27	10	16	20	8 MA
HZ05/26/54	26	54	27	27	10	16	20	8 MA
HZ05/30/72	30	72	36	36	14	22	25	10 MA
HZ05/32/72	32	72	36	36	14	22	25	10 MA
HZ05/40/92	40	92	46	46	19	27	34	10 MA
HZ05/42/92	42	92	46	46	19	27	34	10 MA

Compatibile/similare a Z05 / CC / ECB
Compatible/Similar to Z05 / CC / ECB

UNITÀ DI CENTRAGGIO CONICO
LOCATING UNIT CONICAL

HZ051



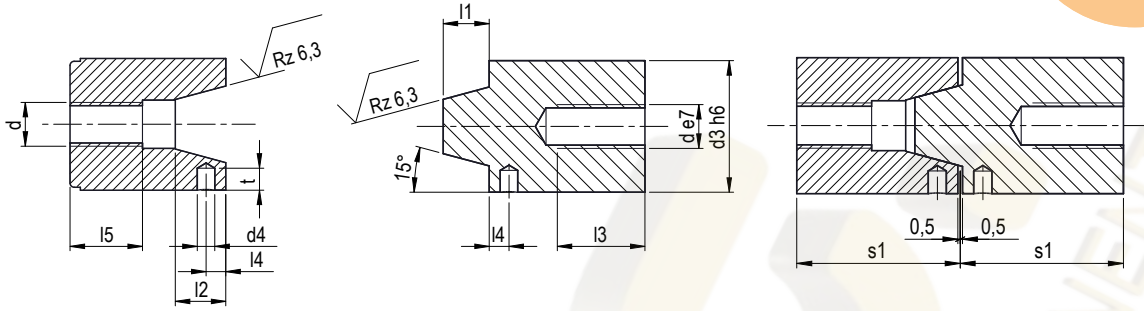
MAT_ 1.2067-54 ± 2HRc



Code per n. pezzi
HZ051 / d1 4 pcs.

Code	d ₁	l ₈	l ₇	l ₆	l ₅	l ₄	l ₃	d ₂	s ₁
HZ051/12	12	7,5	8	8,5	9,6	5	4,5	M4	
HZ051/14	14	8	7,5	6	12,4	7	6	M5	17
HZ051/16	16			5,8					
HZ051/20	20	9,5	12	10,6		10	9	M8	27
HZ051/25	25	11	11	9,2	19,7	11	10		
HZ051/26	26								
HZ051/30	30		15	12,2	25	16	14	M10	36
HZ051/32	32	13							
HZ051/42	42		16	16,8	27	20	18		46

Compatibile/similare a Z051
Compatible/Similar to Z051



MAT_ 1.2343-50 ± 2HRc



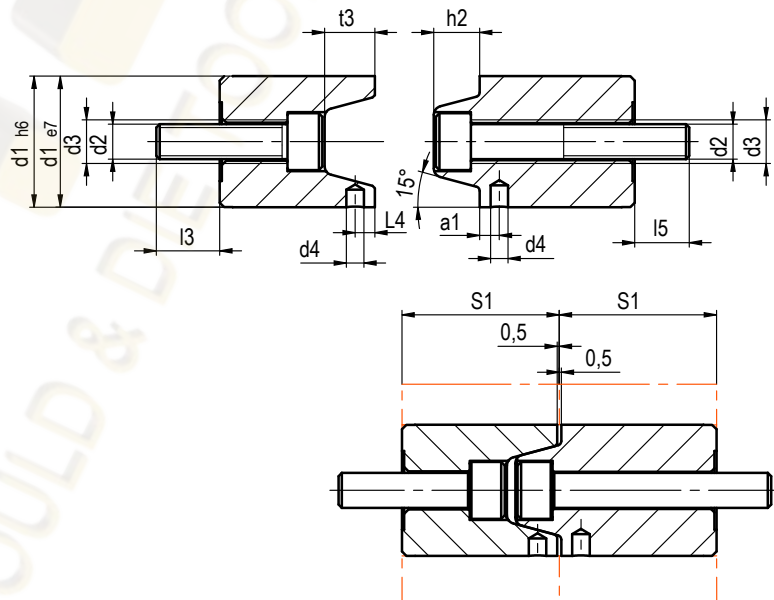
Code per n. pezzi
HZ06 / d3 4pz.

Code	d ₃	t	d ₄	d	l ₅	l ₄	l ₃	l ₂	l ₁	S ₁
HZ06/30	30	5	4	M10	16,5	4,5	20	11,5	10,5	36
HZ06/42	42	7	5	M10	18,5	5,5		15,5	14,5	46
HZ06/54	54	8	6	M12	20,5	7,5	25	18,5	17,5	56
HZ06/80	80	11	8	M16	25,5		30	28,5	27,5	76

Compatibile/similare a Z06 / Compatible/Similar to Z06

HZ061

UNITÀ DI CENTRAGGIO TRAPEZOIDALE
LOCATING UNIT TRAPEZOID



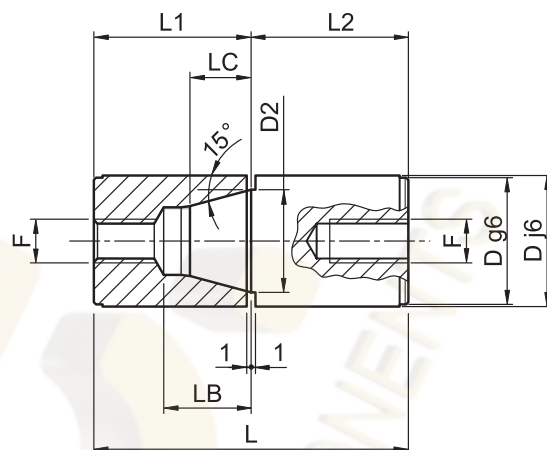
MAT_ 1.2343-49 ± 2HRc



Code per n. pezzi
HZ061 / d1 4pz.

Code	d1	d2	d3	d4	l3	l5	l4	S1	t3	h2
Z061/30	30	M8	M10	4	14,5	12,5	4,5	36	11,5	10,5
Z061/42	42	M8	M10	5	13,5	13,5	5,5	46	15,5	14,5
Z061/54	54	M10	M12	6	18,5	19,5	7,5	56	18,5	17,5
Z061/80	80	M14	M16	8	27,5	21,5		76	28,5	27,5

Compatibile/similare a Z061 / Compatible/Similar to Z061



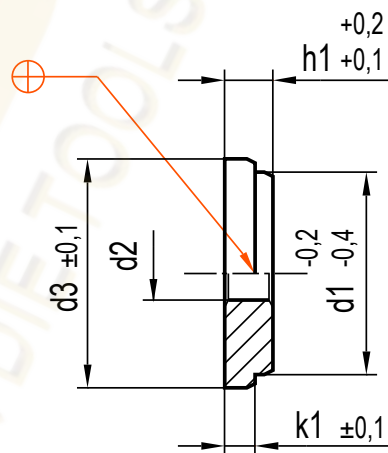
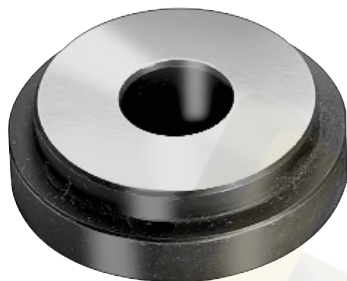
MAT_1.7131 61-63 HRC

 Code per n. pezzi
CCX/D/L 4pz.


Code	D	L	L1	L2	LC	LB	D2	F
CCX/16/50	16	50	25	25	7	13	12	6 MA
CCX/20/64	20	64	32	32	9	17	14	8 MA
CCX/25/64	25	64	32	32	11	18	18	8 MA
CCX/32/80	32	80	40	40	14	24	24	10 MA
CCX/40/100	40	100	50	50	19	27	30	10 MA

**RONDELLA DI TENUTA
HOLDING DISC**

HZ056

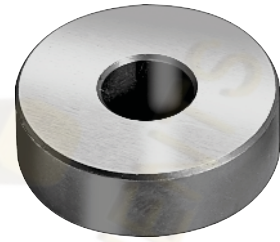
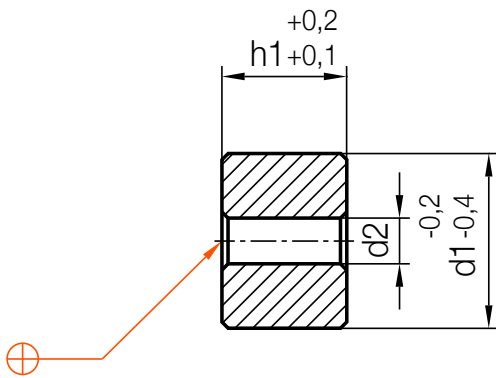


MAT_1.0715 50 ± 2 HRC

 Code per n. pezzi
HZ056 / d1

Code	d1	d2	d3	h1	k1
HZ056/14	14	5,5	16	5	3,2
HZ056/20	20	8,5	25,5	9	6,3
HZ056/26	26		31,5	10	
HZ056/30	30	35,5			
HZ056/42	42	11	47,5		

Compatibile/similare a Z56 / Compatible/Similar to Z56



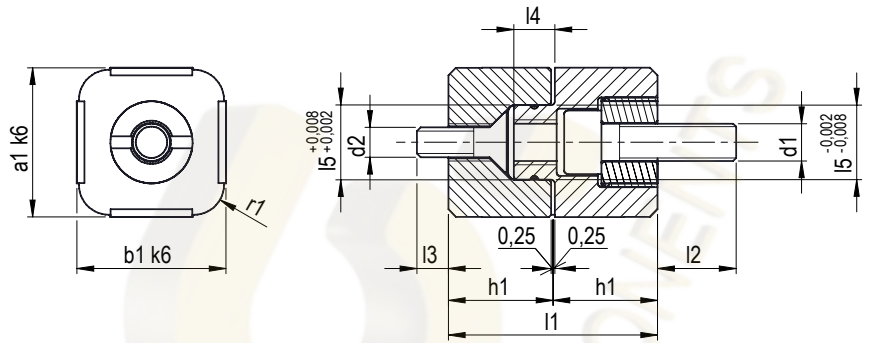
MAT_ 1.0715 50 ± 2 HRC



Code per n. pezzi
HZ055 / d1 / h1

Code	d1	h1	d2
HZ055/12/10	12	10	4,5
HZ055/14/05	14	5	5,5
HZ055/14/10		10	
HZ055/14/14		14	
HZ055/14/19		19	
HZ055/16/05	16	5	9
HZ055/16/10		10	
HZ055/16/19		19	
HZ055/20/09		9	
HZ055/20/10	20	10	9
HZ055/20/20	20		
HZ055/25/09	9		
HZ055/25/10	25	10	9
HZ055/25/20		20	
HZ055/26/09		9	
Compatibile/similare a Z55 / Compatible/Similar to Z55			

Code	d1	h1	d2
HZ055/26/10	26	10	9
HZ055/26/20		20	
2HZ055/6/30		30	
HZ055/30/10	30	10	11
HZ055/30/20		20	
HZ055/30/30		30	
HZ055/32/10		10	
HZ055/32/20	32	20	11
HZ055/42/10		10	
HZ055/42/20		20	
HZ055/42/30	42	30	13,5
HZ055/54/20		20	
HZ055/54/40		40	
HZ055/80/20	80	20	17,5
HZ055/80/40		40	
Compatibile/similare a Z55 / Compatible/Similar to Z55			



MAT_1.2343-54 ± 2HRc



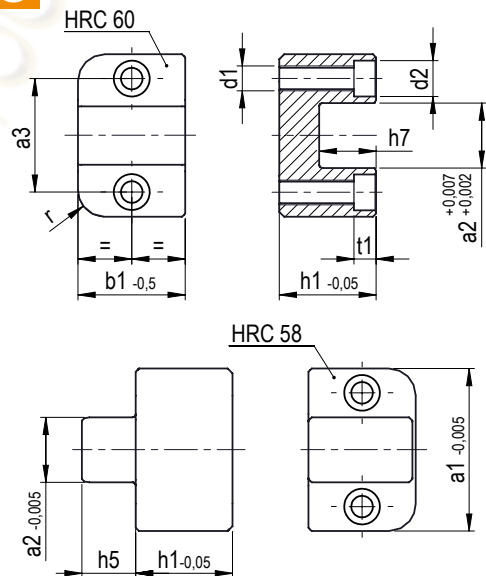
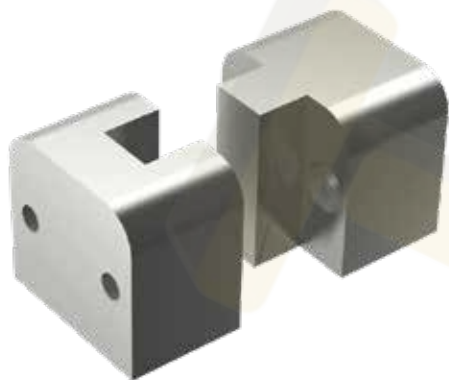
Code per n. pezzi
HZ080 / 40X40 4pz.

Code	b ₁	a ₁	l ₅	l ₄	l ₃	l ₂	l ₁	h ₁	d ₁	d ₂	r ₁
HZ080/20X20	20	20	10	5,5	4	12	28	14	M5	M4	4
HZ080/25X25	25	25	12	7,5	8	13	32	16	M6	M5	5
HZ080/32X32	32	32	16	9,5	12	15	36	18	M8	M6	6
HZ080/40X40	40	40	20	11,5	10	17	45	22,5	M10	M8	6

Compatibile/similare a Z80 / Compatible/Similar to Z80

CENTRATORE PRISMATICO RETTANGOLARE
FLAT LOCATING UNIT

HZ085



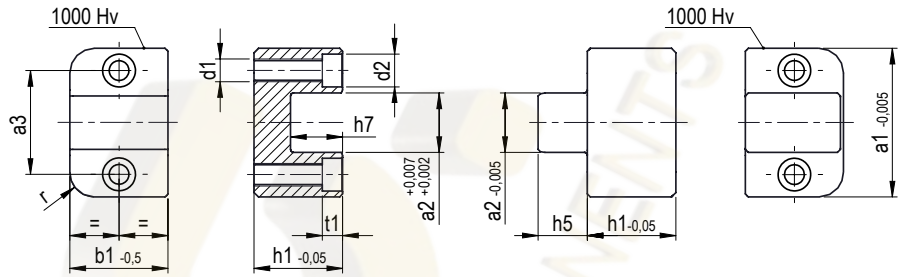
MAT_1.2379-60 ± 2HRc



Code per n. pezzi
HZ085/30x28/1 4pz.

Code	Typ	a ₁	b ₁	h ₁	h ₅	h ₇	a ₂	a ₃	d ₁	d ₂	t ₁	r
HZ085/30x28/1		30	28	19,8	9	10	10	20	M5	8	4,6	6
HZ085/50x33/1	1	50	33	29,8	16,5	17,5	20	35	M8	11	6,8	8
HZ085/75x38/1		75	38	39,8	24	25	30	52	M10	15	9	10

Compatibile/similare a Z085/1 / Compatible/Similar to Z085/1



MAT_1.2379-60 ± 2HRc + DLC coating (1000 Hv)

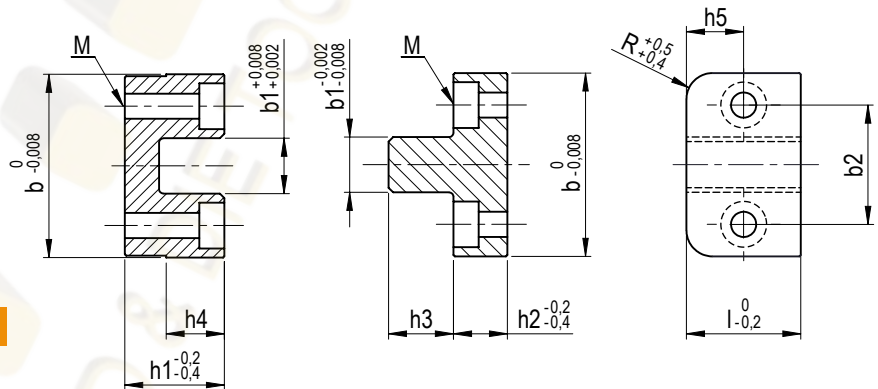
 Code per n. pezzi
HZ085/30x28/2 4pz.

Code	Typ	a ₁	b ₁	h ₁	h ₅	h ₇	a ₂	a ₃	d ₁	d ₂	t ₁	r
HZ085/30x28/2	2	30	28	19,8	9	10	10	20	M5	8	4,6	6
HZ085/50x33/2		50	33	29,8	16,5	17,5	20	35	M8	11	6,8	8
HZ085/75x38/2		75	38	39,8	24	25	30	52	M10	15	9	10

Compatibile/similare a Z085/2 / Compatible/Similar to Z085/2

ME1304

CENTRATORE PRISMATICO RETTANGOLARE
FLAT LOCATING UNIT

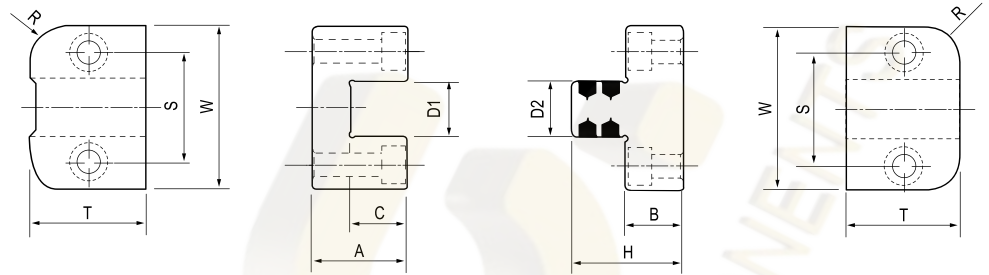
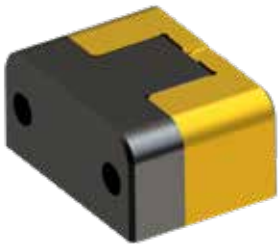


MAT_1.2162-56 ± 2HRc + DLC coating

 Code per n. pezzi
ME1304/50 4pz.

Code	R	M	b ₁	b ₂	h ₁	h ₂	h ₃	h ₄	h ₅	l	b
ME1304/34	8	4	10	22	18	10	12	11	9	18	34
ME1304/40		5	12	26	22	12	14	13	11	22	40
ME1304/50	10	6	18	34	30	15	18	17	15	30	50
ME1304/64		8	22	42	40	18	24	23	20	40	64
ME1304/72		8	26	48	46	20	28	27	26	52	72
ME1304/96	10	10	36	66	57	22	36	31	28	56	96

Compatibile/similare a E1304 / Compatible/Similar to E1304



MAT F: 1.2343 52-54 HRc + TIN
M: 1.2510 56-58 HRc BI.NITR.

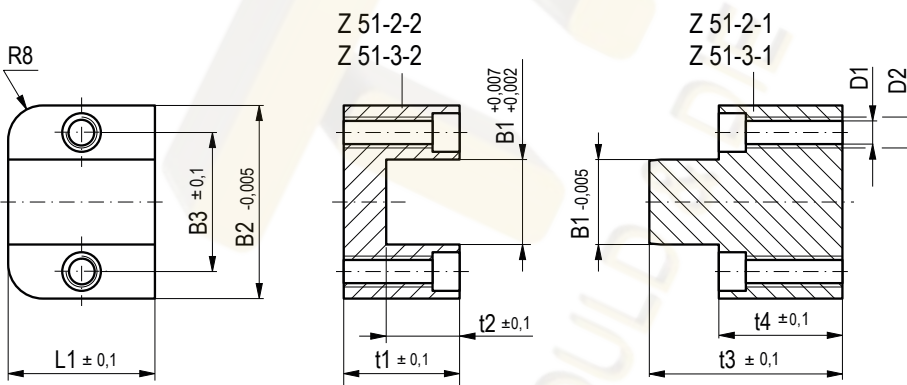


Code per n. pezzi
TM035-26 x4pz.

Code	W 0-0,1	T 0-0,1	A 0-0,05	B 0-0,05	C 0,1	D1 +0,1 ±0,005	D2 0-0,05	H 0-0,1	R	S	Vite
TM035-26	35	26	25	15	14,5	11	11	29	8	23	M5
TM045-30	45	30	25	15	14,5	15	15	29		30	M6
TM055-36	55	36	30	20	19,5	20	20	39		37,5	M8
TM075-36	75	36	35	20	24,5	30	30	44		52	M10
TM100-45	100	45	60	20	39,5	40	40	59		70	M10
TM125-50	125	50	80	25	54,5	60	60	79		92,5	M14

CENTRATORE
LOCATING UNIT

SZ51



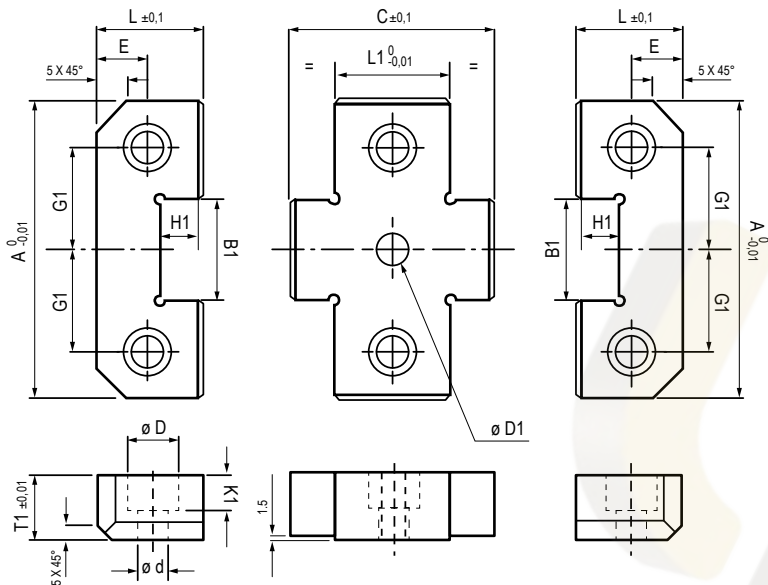
MAT 1.2344 52-54 HRC DLC



Code per n. pezzi
SZ51-2 x4pz.

Code	B1	B2	B3	t1	t2	t3	t4	L1	D1	D2
SZ51-2	20	50	35	29,8	20	48,8	29,8	38	6,5	M8
SZ51-3	30	75	52	39,8	25	63,8	39,8	38	8,3	M10

Compatibile/similare a SZ51 / Compatible/Similar to SZ51



MAT_1.7131 61-63 HRC



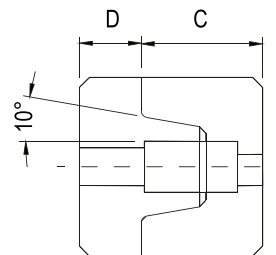
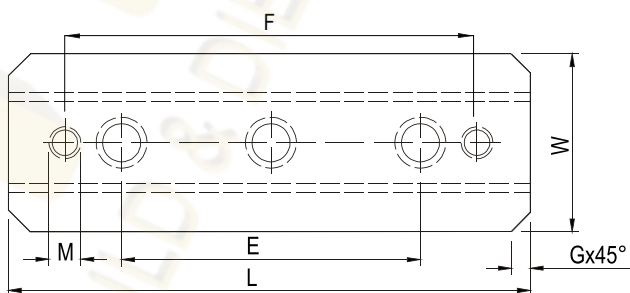
**Code per n. pezzi
DXSI/A/L1 4pz.**

Code	A	L1	B1	C	D	d	E	G1	H1	K1	L	T1	Ø D1
DXSI/50/26	50	26	17	43	10,5	6,5	11	17	9,5	8	21,5	16	6
DXSI/50/36		36		53									
DXSI/75/26	75	26	25	51	16,5	10,5	18	25	15	12	36	19	10
DXSI/75/36		36		61									
DXSI/100/36	100	36	35	71	16,5	10,5	22	35	21	12	45	25	12
DXSI/100/46		46		81									
DXSI/125/36	125	36	45	71	16,5	10,5	22	42	21	12	45	25	12
DXSI/125/46		46		81									

Compatibile/similare a XSI / Compatible/Similar to XSI

DRSI

**CENTRATORE
LOCATING UNIT**



MAT_1.7131 55-60HRC

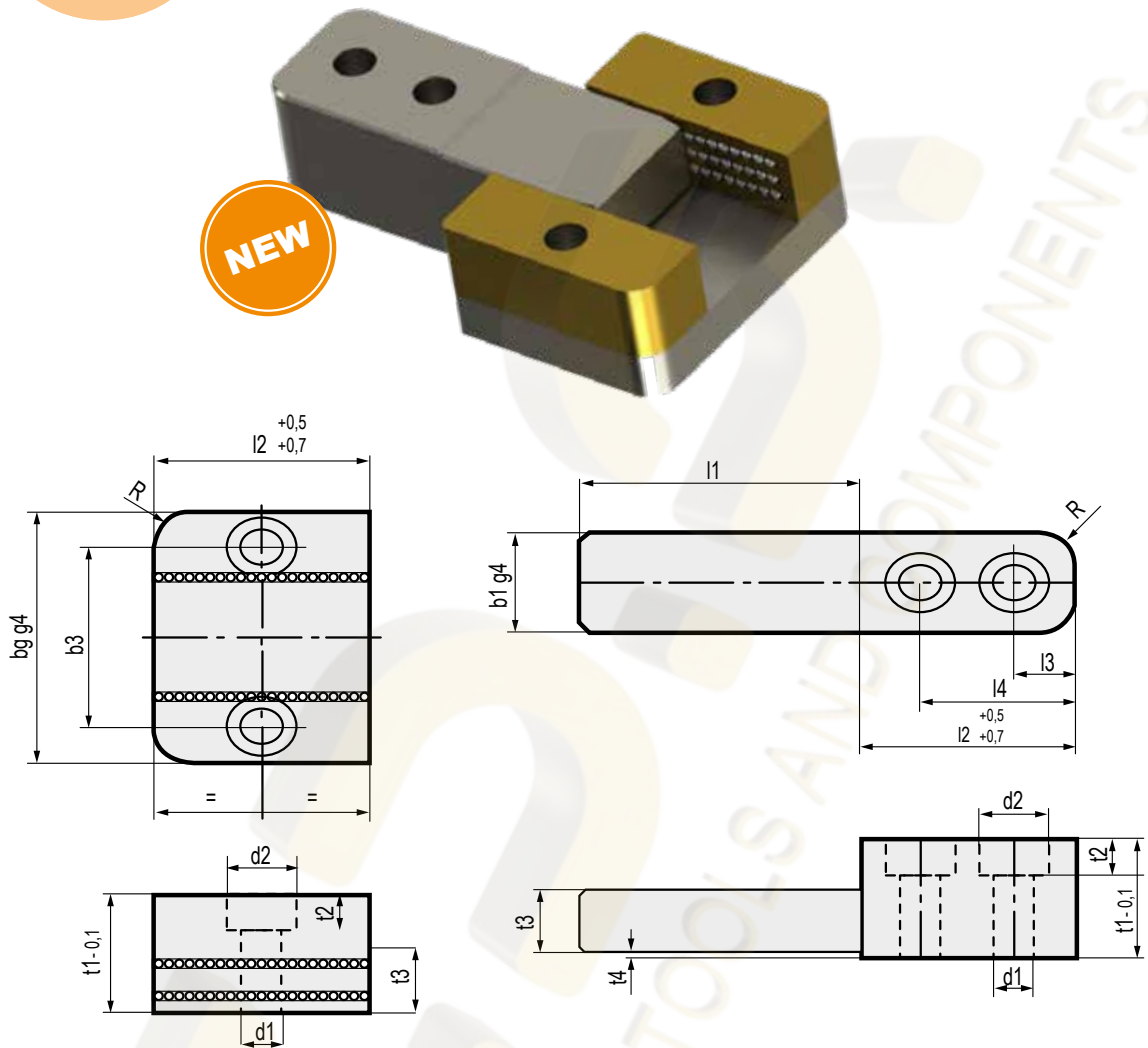


**Code per n. pezzi
DRSI-100 x4pz.**

Code	L	E	W	D	C	G	M	F
DRSI-50	50	-	25	8	17,5	5	M5	36
DRSI-100	100	60	30	10	22		M6	88
DRSI-150	150	100	40	13	25		M8	132

Compatibile/similare a RSI / Compatible/Similar to RSI

NEW

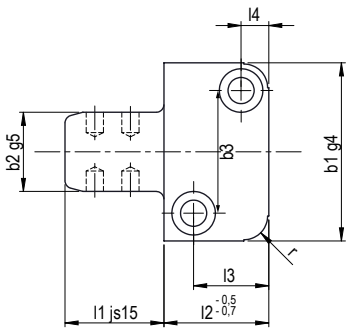


MAT_1.2379 60-62 HRC

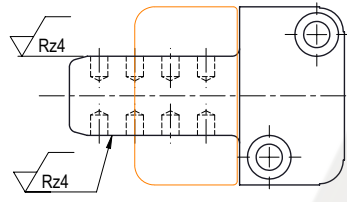


Code per n. pezzi
CL508/ b2 / l1

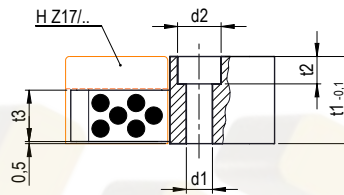
Code	b2	l1	b1	b3	l2	l3	l4	d1	d2	t1	t2	t3	t4	R
CL508/45/025	45	25	12	29	27	7	20	6,3	11	22	6,8	14	1	6
CL508/45/050		50												
CL508/50/032	50	32	17	35	36	10	26	6,3	11	25	6,8	15	1	8
CL508/50/063		63												
CL508/63/040	63	40	25	45	46	13	33	8,5	15	32	9	20	1	8
CL508/63/080		80												
CL508/85/050	85	50	35	60	56	16	41	10,5	18	36	11	24	1	10
CL508/85/100		100												
CL508/100/056	100	56	45	74	66	19	48	13	20	40	13	25	1	10
CL508/100/112		112												



Typ 1



Typ 2



MAT_ 1.7131-54 ± 2HRc



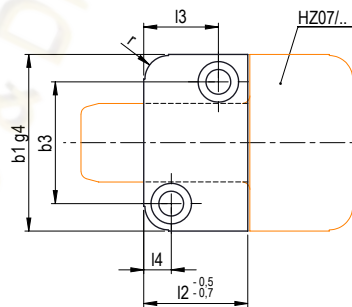
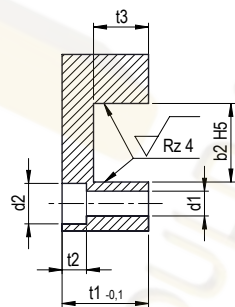
Code per n. pezzi
HZ07/46/32x80 4pz.

Code	r	t ₃	t ₂	t ₁	d ₂	d ₁	l ₄	l ₃	b ₃	b ₁	l ₂	b ₂	l ₁	Typ
HZ07/22/16x20	6	11		20				15	26	40	22	16	20	1
HZ07/22/16x40							7						40	2
HZ07/27/20x25		13	6,9	22	11	6,6		19	31	45	27	20	25	1
HZ07/27/20x50													50	2
HZ07/36/25x32	8	14		25			9	27	35	50	36	25	32	1
HZ07/36/25x63													63	2
HZ07/46/32x40		19	9	32	15	9	11	35	45	63	46	32	40	1
HZ07/46/32x80													80	2
HZ07/56/40x50	10	22	11	36	18	11	15	40	60	85	56	40	50	1
HZ07/56/40x100													100	2
HZ07/66/50x56		24	13	40	20	14	18	48	74	100	66	50	56	1
HZ07/66/50x112													112	2

Compatibile/similare a Z07 / Compatible/Similar to Z07

HZ17

GUIDA RETTANGOLARE FEMMINA
FEMALE GUIDE RETAINER



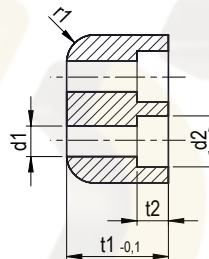
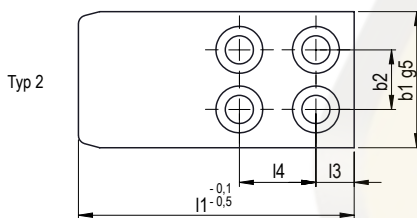
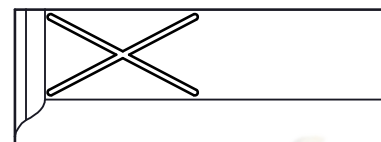
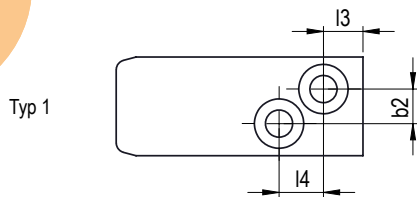
MAT_ 1.7131-54 ± 2HRc



Code per n. pezzi
HZ17/46/32 4pz.

Code	r	t ₃	t ₂	t ₁	d ₂	d ₁	l ₄	l ₃	b ₃	b ₁	l ₂	b ₂
HZ17/22/16	6	12		20				15	26	40	22	16
HZ17/27/20		14	6,2	22	10,3	6,3	7	19	31	45	27	20
HZ17/36/25		15		25				9	27	35	50	36
HZ17/46/32	8	20	9	32	15	9	11	35	45	63	46	32
HZ17/56/40	10	23	11	36	18	11	15	40	60	85	56	40
HZ 17/66/50		25	13	40	20	14	18	48	74	100	66	50

Compatibile/similare a Z17 / Compatible/Similar to Z17



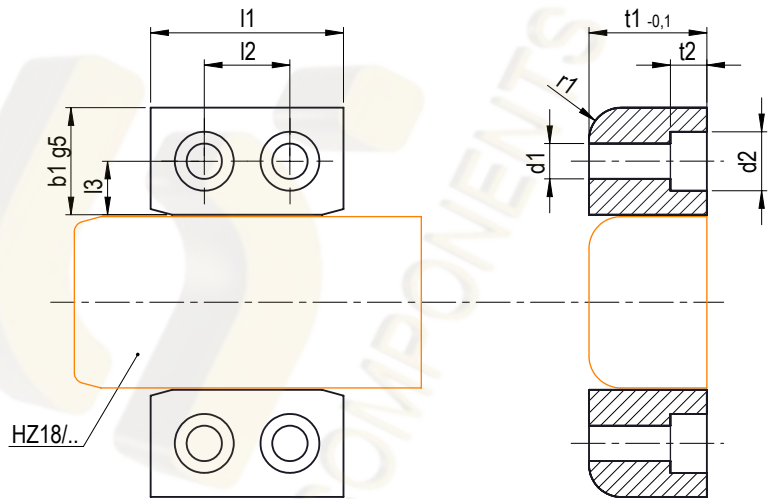
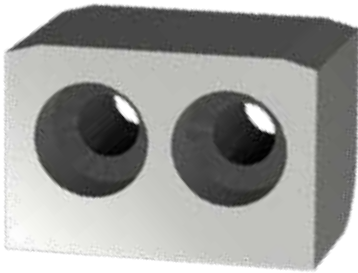
MAT_ 1.2162-58 ± 2HRc



Code per n. pezzi
HZ18/50x30x90 4pz.

Code	Typ	b ₁	t ₁	l ₁	l ₃	l ₄	b ₂	d ₁	d ₂	t ₂	r ₁
HZ18/20x18x50	1	20	18	50	8	9	7	5,5	10	5,7	6
HZ18/20x18x75		20	18	75	8	9	7	5,5	10	5,7	6
HZ18/20x18x90		20	18	90	8	9	7	5,5	10	5,7	6
HZ18/32x22x70	2	32	22	70	9	18	14	6,6	11	6,8	6
HZ18/32x22x90		32	22	90	9	18	14	6,6	11	6,8	6
HZ18/32x22x112		32	22	112	9	18	14	6,6	11	6,8	6
HZ18/32x22x125		32	22	125	9	18	14	6,6	11	6,8	6
HZ18/32x22x150		32	22	150	9	18	14	6,6	11	6,8	6
HZ18/50x30x90	2	50	30	90	12	21	24	9	15	9	8
HZ18/50x30x125		50	30	125	12	21	24	9	15	9	8
HZ18/50x30x150		50	30	150	12	21	24	9	15	9	8
HZ18/50x30x175		50	30	175	12	21	24	9	15	9	8
HZ18/50x30x200		50	30	200	12	21	24	9	15	9	8
HZ18/63x32x112	2	63	32	112	15	26	30	11	18	11	10
HZ18/63x32x150		63	32	150	15	26	30	11	18	11	10
HZ18/63x32x175		63	32	175	15	26	30	11	18	11	10
HZ18/63x32x200		63	32	200	15	26	30	11	18	11	10
HZ18/63x32x250		63	32	250	15	26	30	11	18	11	10
HZ18/80x35x112	2	80	35	112	15	26	44	11	18	11	12
HZ18/80x35x150		80	35	150	15	26	44	11	18	11	12
HZ18/80x35x175		80	35	175	15	26	44	11	18	11	12
HZ18/80x35x200		80	35	200	15	26	44	11	18	11	12
HZ18/80x35x250		80	35	250	15	26	44	11	18	11	12
HZ18/100x50x175	2	100	50	175	18	32	55	13,5	20	13	15
HZ18/100x50x200		100	50	200	18	32	55	13,5	20	13	15
HZ18/100x50x250		100	50	250	18	32	55	13,5	20	13	15
HZ18/120x65x200	2	120	65	200	20	35	75	13,5	20	13	15
HZ18/120x65x250		120	65	250	20	35	75	13,5	20	13	15
HZ18/120x65x300		120	65	300	20	35	75	13,5	20	13	15

Compatibile/similare a Z18 / Compatible/Similar to Z18



MAT 1.2162-58 ± 2HRc

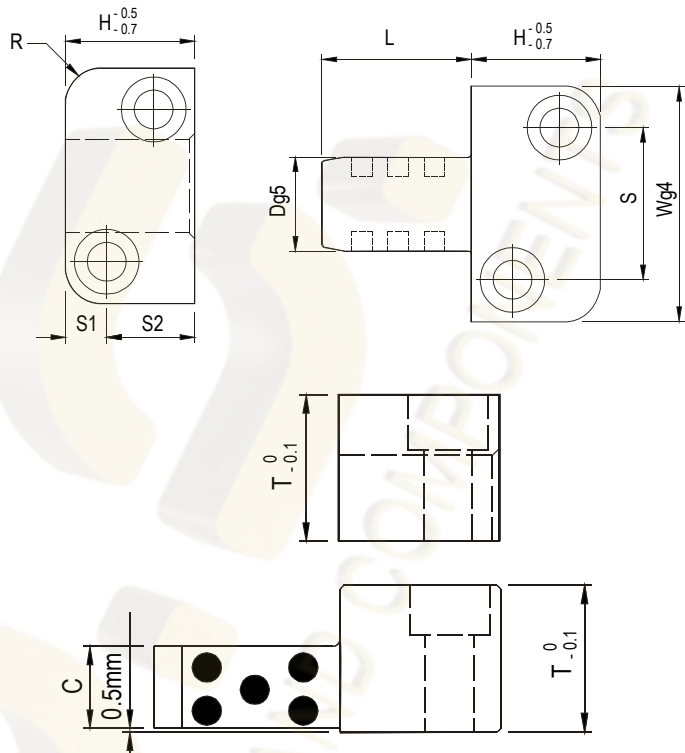


Code per n. pezzi

HZ19/40x50x76 4pz.

Code	b ₁	t ₁	l ₁	l ₂	l ₃	d ₁	d ₂	t ₂	r ₁
HZ19/18x18x27	18	18	27	12	8	5,5	10	5,7	6
HZ19/20x22x36	20	22	36	16	10	6,6	11	6,8	6
HZ19/25x30x46	25	30	46	24	11	9	15	9	8
HZ19/32x32x56	32	32	56	30	16	11	18	11	10
HZ19/35x35x56	35	35	56	30	16	11	18	11	12
HZ19/40x50x76	40	50	76	40	17	13,5	20	13	15
HZ19/45x65x86	45	65	86	50	20	13,5	20	13	15

Compatibile/similare a Z19 / Compatible/Similar to Z19



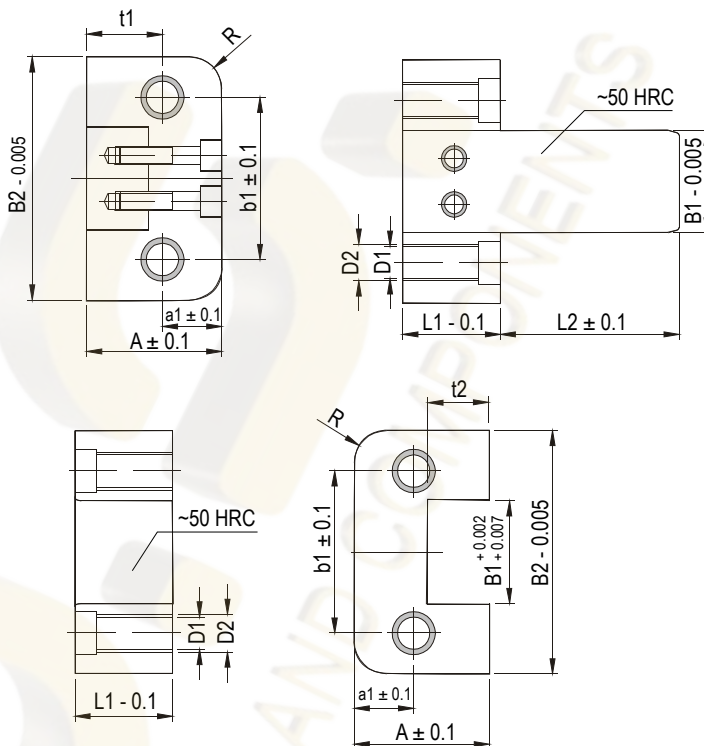
MAT_1.2210 50-56HRc



Code per n. pezzi
PSLPM16x40 x4pz.

Code	L	D	T	W	C	H	S1	S2	S	R	Vite
PSLPM16x20	20	16	20	40	11	22		15	26		
PSLPM16x40	40	16	20	40	11	22		15	26		
PSLPM20x25	25	20	22	45	13	27	7	19	31	6	M6 - 1.0x25
PSLPM20x50	50	20	22	45	13	27		19	31		
PSLPM25x32	32	25	25	50	14	36	9	27	35		M6 - 1.0x30
PSLPM25x63	63	25	25	50	14	36		27	35		
PSLPM32x40	40	32	32	63	19	46	11	35	45	8	M8 - 1.25x35
PSLPM32x80	80	32	32	63	19	46		35	45		
PSLPM40x50	50	40	36	85	22	56	15	40	60		M10 - 1.5x40
PSLPM40x100	100	40	36	85	22	56		40	60		
PSLPM50x56	56	50	40	100	24	66	18	48	74	10	M12 - 1.75x45
PSLPM50x112	112	50	40	100	24	66		48	74		

Compatibile/similare a / Compatible/Similar to



MAT_1.2343 52-54HRc



Code per n. pezzi
SZ46/16/20 x4pz.

Code	B1	L1	L2	A	B2	D1	D2	a1	b1	t1	t2	R
SZ46/16/20	16	20	20	22	45	6,8	M8	11	30	11,5	12	8
SZ46/16/40			40									
SZ46/30/40	30	26	40	35	60	6,8	M8	17,5	46	19,5	20	10
SZ46/30/63			63									
SZ46/48/32	48	36	32	46	100	10,3	M12	23	74	25,5	26	12,5
SZ46/48/50			50									
SZ46/48/63			63									
SZ46/48/80			80									
SZ46/77/50	77	56	50	60	150	14	M16	30	114	35,5	36	16
SZ46/77/71			71									
SZ46/77/100			100									

Compatibile/similare a Z46 / Compatible/Similar to Z46



Via Maestri del Lavoro, 12
33080 Fiume Veneto (PN) Italy
Telefono: +39 0434 564010
Fax: +39 0434 564008

Per richieste di informazioni, offerte e ordini:
UFFICIO COMMERCIALE: commerciale@tdspn.it

Per informazioni amministrative:
AMMINISTRAZIONE: amministrazione@tdspn.it